



# NEWSLETTER

November 2016 Issue 529

## Contents:

**The Ear** - beware, he is watching and listening, he is everywhere, everywhere, everywhere, anywhere.....

### Coming events

### Fishing Reports

### The News

**From the Fishing Recorder** - who has caught what

**What fish is this?**

**Birthday people** for November

## Coming Events details page 2

- |         |   |
|---------|---|
| 3 Nov   | General meeting   |
| 4-6 Nov | Burrinjuck Convention                                   |
| 19 Nov  | Georges R. Mulloway night club outing                   |
| 1 Dec   | General meeting—club Christmas Social and Raffle night  |
| 25 Dec  | Christmas greetings                                     |
| 1 Jan   | Happy New Year  |
|         | Please remember there are no club activities in January |

## The News details page 2

The **boat ramp at Oatley Bay** was officially opened on **Thursday 13 October**. But nothing in the local paper—perhaps they have received some untoward comments about the work not changing much?

The **Gone Fishing Day** was held on 16 October. Story and pics hereabouts. The main Sydney event was held on the beach around Ramsgate/Sans Souci. We had our Gone Fishing Day fishing the Bay with a few visitors. Story and pics hereabouts.

Following on from Stan's talk at the last meeting see details on page 4, some have written to our local member regarding these proposed **new marine parks** in our home waters and without any sound scientific data. The NSW Gov't may be too occupied with recent issues to be concerned right now. But there maybe a further opportunity next year when the actual sites are debated.

## The EAR

The Rugby season has finished. See the ear. But the All Blacks are looking to make it 3-0 this weekend—and they did—easily.



Which St George member took his family for a boat ride but forgot to park his car and boat trailer in the carpark? He left it on the boat ramp. YIKES!!



Doesn't look like the ramp was too busy. Anyway PL-607, you didn't have to wait and back it down again—might try it sometime? Were the keys still in the car? Engine still running?

Which member took a family fishing at the Gone Fishing day last Sunday and one of his guests using a loaned rod had a decent bite. The drag howled zip... zip....zip (note the smooth drag) then PING.... The line had broken. Now not 1kg but 6+kg. The owner reckons he must have been bitten off??

Haven't been able to squirrel out any further stuff.. But next month ??

## Birthday people for November

- |                     |                              |
|---------------------|------------------------------|
| 1st Phil Turner     | 25th Brad Hinchy             |
| 11th Peter Hewitt   | 27th Debbie Lattin (Worsley) |
| 17th Nathalie dHyon |                              |

## Coming Events - *the detail*

- 3 Nov General meeting # 527. This month is the club's 48th birthday. *Ray Lonsdale* from the local RMS is to be our guest speaker. Ray is the Boating Education Officer, Boating Operations Branch - Sutherland.
- 4-6 Nov Burrinjuck Convention
- 9 & 10 Nov FishCare Workshops Gunnamatta Bay
- 19 Nov Georges River mulloway night club outing. As Stan indicated at the last meeting there are plenty of Jewies in the river right now. At the time of writing final arrangements were not to hand. More at the next meeting &/or by email.
- 1 Dec General meeting—club Christmas Social Extravaganza and Extraordinary Raffle night
- 1 Jan Happy New Year
- Please remember there are no club activities in January

## Fishing Reports

Bill,

On 14th October I went down the river chasing Estuary Perch and Flathead on lures. Third cast I hooked a decent fish and after a long fight I landed a 90cm, 6.2kg Mulloway. After a short stay I also landed a Perch and 2 keeper Flathead. Had to give it away because the esky wasn't big enough to keep the fish fresh.

Regards,  
Bob (McMahon)



continued next page and page 8

## from our President



At our last meeting, Stan Konstantaras from ANSA and RFA gave an excellent and detailed talk on the current developments regarding the Hawkesbury Shelf Biodiversity Region (Newcastle to Shellharbour) and the proposed lockouts to recreational anglers.

Following this, documents were forwarded to members to assist in preparation of responses to their local member. Your support is essential and vital if fishing as we know it is to continue into the future.

On a different note, a thank you to members who took guests fishing on the 'Gone Fishing Day' and to those members who provided support at the lunch which followed.

The day, although extremely busy with water craft, did provide the opportunity introduce our guests to fishing.

A particular thanks to Andrew for coordinating the boats and crew. As a consequence, it is understood that several have now become members of SGSFC. Welcome.

Should you have any question please ask as there is a wealth of fishing experience and knowledge within the Club to tap.

Ray Lonsdale from RMS will talk at our next meeting on 3 November on changes to the Boating Rules. This follows concerns raised, particularly the significantly increased penalties for specific events or incidents.

The evening will provide the opportunity to clarify your understanding of particular Boating Rules.

I look forward to seeing you on the night and support the speaker.

Good fishing

Dennis

## The SICK List

**Judith Sainsbury** suffered a stroke in the wee small hours of last Monday 24/10. She is in John Hunter Hospital Newcastle., and as you would expect not doing too well. We extend our get-well-soon wishes to Judith and to Max.

**Peter Mortel** is recovering nicely. Helen is still trying to get him to start on her 'to-do-list' soon.

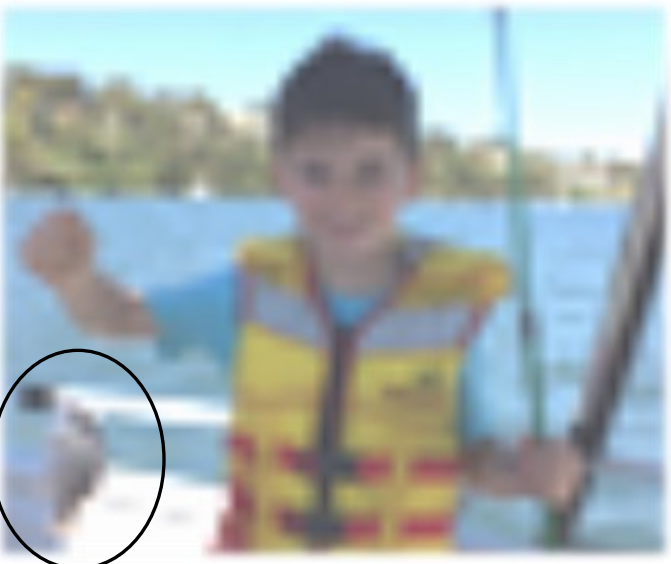
## Fishing Reports continued...

Bill

A few pics from my day out with the Robles family. Four fish caught on the day (unfortunately no keepers) but lost a couple of good ones after long runs.

I think they had good time, especially when Alesia won a rod and goodies bag at the BBQ.

John (Everett)



Hi Bill,

Attached are a couple of photos from the Gone Fishing day of Julian and Nina.

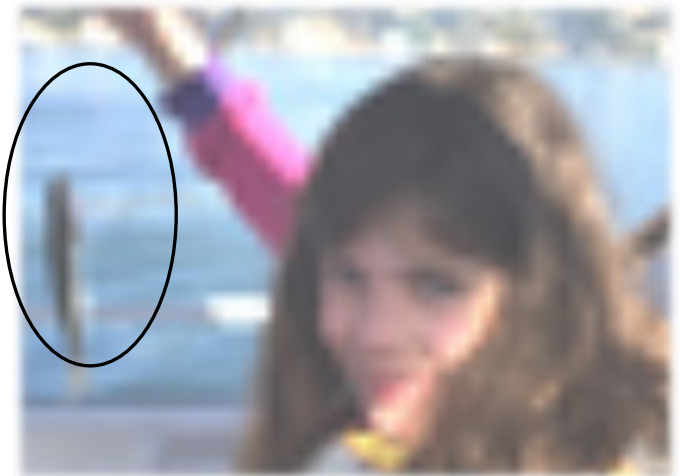
We were a little excited when we caught the bream and flathead that we forgot to take photos of the kids actually holding them.

Due to the windy conditions, we stayed inside the Georges near Baldface Point. The kids landed around a dozen fish between them with two fish being of legal size. Eva caught a 28.5cm bream and Nina a 40cm flathead. Julian did not manage to catch a fish to enter into the competition however he focused on a quantity over quality that day.

There were a few highlights that day however the one that stood out for me was the transition in Nina from the time that she first sat in my small boat, to the girl holding her prize and having her photo taken sporting a beaming smile. This was the first time that the two girls had been on a boat smaller than a ferry and Nina in particular was not convinced that my boat would remain buoyant. I received many questions about sharks and the boat sinking and young Nina remained sceptical with the answers provided. She did however start to settle in after an hour or so and when she caught her first fish, a tailor, she suddenly found her sea legs. Upon our return to Oatley boat ramp, the two girls were standing up holding onto the railing and cheering every time we went over a wave. They had a great day on the water and are now our newest club members.

Regards,

Andrew (Perros)



continued page 8

## From our last meeting

**Talk by Stan Konstantaras – President of ANSA NSW and Chairman of the Rec. Fishing Alliance (RFA)**



### Background

Stan started by saying that the 59 sites identified by the Greens for further Marine National Parks and agreed to by the Marine Estate Management Authority (MEMA) will be going to Parliament early November. Although the 59 sites are between Newcastle and Wollongong there were significant sites in *our area* and around Sydney, he stressed the urgency of this matter and our need to write to our local member and request they reject any move to further lock us out of our fishing areas.

Recreational fishing is now classed by MEMA as a Medium Risk was earlier assessed as a High Risk – above that of commercial fishing! This assessment carried out by consultants to MEMA.

### How all this came about

- The NSW Gov't asked the Dept of the Environment to look at what needs to be done to protect our marine environment
- This push is being funded by the Greens, NSW Fisheries some money but not as much.
- Why do you want this area? – don't know, I just want it!
- Just ½ dozen people have put this paper together

### The Detail

- The lock outs include more parts of the Harbour, Port Hacking, Kurnell, and Osborne Shoals.
- 50% of all Botany Bay
- Have good Fisheries management now, bag limits recently reduced
- It is not about Fisheries management – environmental impact
- What is the plan for current marine parks?
- No science in this at all
- It is all about votes – gov't needs the greens
- Can't see many policies
- Lock outs are the easiest option
- There is no money being provide by the Trust Fund
- DPI being done over – hands tied – don't want lockouts
- Implementation and compliance- not cost of maintaining
- Easiest option, implement these parks – put lines on a map
- All being done by the Dept of Environment and Heritage
- Aquaculture in marine parks, kingfish, mussels

### What you can do?

- Write to your local member
- Meet your local member and talk about this
- We don't want to see more lock outs
- Lockouts, Rally's and the like only annoy them
- 15-20 letters get their attention

### What to write?

- Handwritten letters far better
- Some individuality in the letters
- What are you doing about this proposal?
- Talk about what fishing means to you have a lot of access over the years
- Fishing as a sport under pressure
- Ask for a reply – will you support me or not?
- Must be a resident in your electorate

### Visit your local member

- Not going to bite your head off
- Take another person with you, family member preferred
- Speeman is the Minister of the Environment, knock on door have a coffee
- What are you doing about this proposal?
- Talk about what fishing means to you have a lot of access over the years
- Must be a resident in your electorate

### What happens next?

- Cabinet meeting in this term probably in the next two weeks
- Consultation paper by end of year – map out – some months of consultation into next year won't change it.

### Conclusion

- Debris left by fishos over the years
- Anglers could put together a good management plan as an alternative
- Plan is on paper
- After Newcastle-Wollongong where next?

### There may still be time

By the time you read this the NSW Gov't should have discussed this in Cabinet. However considering the matters being considered by Parliament at the moment it is possible it will miss this year's sitting time. Parliament is due for the summer break starting 24 November.

- We will keep you informed.



# CLUB RECORDER'S REPORT - October 2016

Certificates awarded at October meeting, events between 25 September and 27 October

Congratulations to the following anglers for these **Masters captures** last month:



Deborah Logan – All Tackle Species – Yellowfin Bream #5 405mm	CAA pts	5
Peter Logan – All Tackle Species – Australian Salmon #3 560mm	CAA pts	5
Belinda Rayment - Gamefishing – Tiger Shark 292.5kg on 15kg (1,560 pts)	CAA pts	5
This capture was a length only Club Record	CAA pts	3
This capture was a Club Record on 24kg line		-

**ANSA's Glenbawn Convention** was held over the weekend of 15-17 September. If any members attended this convention please let me know so that I can award CAA points.

<b>CHAMPION ANGLER AWARD 2016/17 - END OCTOBER</b>							
<b>MENS</b>		<b>LADIES</b>		<b>JUNIORS</b>		<b>Non-NSW</b>	
Peter Logan	5	Belinda Rayment	16	no entries	-	no entries	-
Ray Agius	4	Debbie Logan	10				
Brad Sutton	3						
Trevor Dean	3						

You can upgrade entries in our length only competition at any time during the year, so make sure you notify me of any captures of our target species of Flathead, Snapper, Salmon, Bream, Whiting or Tailor.

<b>DIVISION 1 - LENGTH ONLY COMPETITION - 2016/17</b>				Updated as at:	27/10/2016
Angler	Best Flathead - Length (mm)	Best Snapper - Length (mm)	Best Salmon - Length (mm)	Combined length (mm)	
John Everett	650	310	-	960	
Trevor Dean	590	370	-	960	
Peter Logan	-	-	655	655	
Dennis Simpson	-	-	620	620	
Bob McMahon	580	-	-	580	

<b>DIVISION 2 - LENGTH ONLY COMPETITION - 2016/17</b>				Updated as at:	27/10/2016
Angler	Best Bream - Length (mm)	Best Whiting - Length (mm)	Best Tailor - Length (mm)	Combined length (mm)	
Peter Logan	380	-	380	760	
Debbie Logan	410	-	330	740	
Bob McMahon	-	-	460	460	
Brendan McMahon	-	-	440	440	
Brad Sutton	390	-	-	390	
John Everett	370	-	-	370	
Trevor Dean	320	-	-	320	

Please send all claim forms to me at PO Box 923, Caringbah NSW 1495 or email to [belinda.rayment@bigpond.com](mailto:belinda.rayment@bigpond.com)

*Belinda*

## Some nostalgia — from October 1972 newsletter

### "MY SUCCESS ON 1 KILO

Specialisation has been the secret behind many successes and so after many attempts for master-size fish without luck on 3 and 5 kilo, I decided to try 1 kilo.

If one is to be successful, one must be prepared to have the best gear. The local sports store suggested that for this type of fishing, particularly trolling, I would need a reel with at least 700 metres capacity and so \$155 poorer, I came away with a new ABU 5000C.

So far, towards my Masters, my catches have been

Species	Factor	Weight	Points	Remarks
1. Barracouta	0.8	1.94	154	
2. Bonito	1.5	3.01	452	
3. Kingfish	1.5	10.0	1500	Club record
4. Tailor	1.0	2.0	200	
5. Salmon	1.0	3.5	350	
6. Tuna-Striped	1.5	6.0	900	Record claimed
7. Frigate Mackerel	1.5	1.25	187	
8. Pike	0.8	2.27	182	
9. Shark-hammerhead	1.0	87	8700	Australian record

The choice of line is very important and so too is the leader. The sports store had some new brand which cost about \$12 for the 1000 metres while the leader - I use 80lb, Tortue - cost about \$4 for 40 metres. You might think the leader size is a little heavy, but it is disappointing to have the leader worn through by a predator after a long tussle using the light main line.

I had great difficulty in finding a carbon blank or a fibreglass rod to suit my type of fishing, so reluctantly I settled for Rangoon cane to get the length I wanted - 18 feet. With the roller guides right through - 11 of them including the tip - I was up for \$61 - the blank having cost \$2. The positioning of the reel seat was important for this type of fishing and I have found that a place 5 feet from the butt is best. You'll see why in a moment.

Having placed the reel on the rod complete with line and 27 feet (ie  $1\frac{1}{2}$  rod lengths) of leader I used araldite on the edge of the spool of the ABU to prevent it turning.

Any trolling lure can be trolled successfully with this outfit provided that the rod can be adjusted so that the rod angle is almost horizontal. (Some device must be used to prevent the rod pulling out of the rod holder as I found, to my dismay, after losing the first two outfits I tried). With this technique the lure is about 30 feet behind the boat - right in the wash.

Before aralditing the side of the spool, I ensured that several turns of the leader were on the spool. I have heard of other members losing fish repeatedly on light line but so far, I have not been busted up. The only time I had any trouble was when a big yellowfin hit the lure and pulled half the transom away.

I am trying very hard for my 10<sup>th</sup> species using this same outfit - a blackfish - but can't seem to get any bites. Any helpful ideas would be appreciated."

## **84 CHILDREN FISHING — ALL AT THE ONE TIME**

On 12 October, a **fishing day was held at the SIRC** (Sydney International Regatta Centre) Penrith, for 84 children. This was part of NSW Fisheries, Get Hooked Program where children (mainly of primary school age) are taught as an add-on to the schools curriculum, the elements of fishing.

**Code 1: 'Take only what you need'** - The importance of the food chain and how taking too many of one species of fish may affect the entire chain, so only take enough for your own.

**Code 2: 'Fish with friends'** - Safety near waterways, awareness of safe fishing conditions and also the importance of always having a responsible fishing friend to go fishing with you.

**Code 3: 'You're the solution to water pollution'** - How to identify and reduce the impact their actions may have on waterways, in particular the impact litter can have on aquatic species.

**Code 4: 'Throw the little ones back'** - Students investigate the rules and regulations that relate to the size of fish you are allowed to catch and why we need to keep certain species and sizes of fish for the future.

**Code 5: 'Don't leave your tackle behind'** - Students develop an understanding of the ways they can reduce the risk to aquatic species by ensuring they are responsible and careful fishers with a respect to the environment they are fishing in.

**Code 6: 'Quality catchments equal quality fish'** - Students investigate the complex nature of a catchment and develop an understanding of the impacts of human activity in one waterway and how it can impact the entire catchment.

The children were from **Beresford Road Public School** at Greystanes.

The Penrith establishment has carp, bass and an occasional catfish in these waters. The program for the day (after having the lectures and theory completed a few months ago in the school) was to actually go fishing. The program:

Bus 1 arrived 9.30 with 45 children on board. The first part included the children being assembled in the covered area and Blake from Fisheries running through the program for the day and most importantly the safety issues that all must comply with.

This included the wearing of safety glasses (to prevent eye damage) the fitting of 'hook safes' around the hook and sinker assembly (to also prevent injury to others) and the correct way to carry a rod when moving to the fishing location.

The group was divided in half with the first children learning the 'Rules & Regulations' associated with fishing. This was run by Graeme a volunteer. This group learned

about legal lengths of fish, the number allowed to be taken home and locations where fishing is not permitted. The reasons for having these 'rules' was explained.

The other half of the group went casting on a flat field where 'targets' were positioned some 20 meters from the casting line. There were 4 lines of children each being shown to correct method of holding the rod prior to casting. The method of picking up the line and opening the bail arm. Then the actual casting was then attempted by each child.

Although around well over half had been fishing before it was clear this did not include casting! Some were more coordinated' and managed to cast rather proficiently, the others need more work. Casting coaching was carried out by Warren, John and the writer.

The two groups swapped over and then with their teachers took a pre rigged rod and walked to the lake edge. The water had been berleyed heavily (?). Baits of corn niblets were applied to the circle hooks. It must be said here that little fingers, slippery niblets and circle hooks, is not quickly done! The volunteers seemed to do most of it!

The 84 children and teachers spread out along the waters edge. Casting tuition and practise now came to the fore. Distance was at the expense of accuracy. Lines were crossed and tangled. However, having cast it seemed essential that the bait be immediately retrieved to check whether there had been a bite. Each were encouraged to leave the bait in the water after casting but there was always Sir, I needed to check the bait.

However, there was the cry "I've got a fish". Rods were dropped and kids came running from everywhere. And the luck girl landed a catfish. The volunteers were there to ensure no one was spiked. The spines of the catfish was explained to those standing by and the fish released.

Time was up by this and the children made there way back to their bus. In the meantime Bus 2 arrived and the whole episode repeated. There were no fish at all caught in the afternoon session.

A pleasant but tiring day.

Bill Harvey

Fishcare volunteer.

## Fishing Reports continued

Hi Bill,

I have only just returned home as I have been travelling in Tasmania. I did get a Tasmanian fishing licence and took a fly rod on the off chance I might get a chance to trout fish but the lake and river levels were well up from the flooding they have had.

On the local scene around the rocks the fishing has fired up early this year. There are plenty of bread and butter fish to take: luderick, six spine leatherjackets and grouper. The other interesting thing is the large number of kingfish moving around in schools, usually 15-20 but the other day there was the biggest school I have ever seen, well over 100. At first I thought they were salmon as they were on the surface milling around out wide. As I spun towards them 10-15 would peel off chasing my lure all the way into the rock ledge. They were taking dead garfish and squid heads under bobby corks and also 45 gram spayno metal lures. Landed 8 in one session and all bar one was undersize 50-60cm. They are only turning up where I fish just around the tide changes. The water is full of 3cm white bait but no yellowtail have arrived. Plenty of whales in close moving south but playing as they go - fin splashing and breaching.

Went up to Lithgow Monday to see what is happening in the lakes. Seven hours fishing for two hookups and gear failure - trace line 8lb snapped on one and the other snapped a hook at the bend. Both took dry flies around midday - nothing seen after 2pm and fished to 7.30pm before driving home.

Cheers Phil (Turner)

## What fish is this ?

Of xxx, Cuv. & Val., Mr Hill says:- "they are ground fishes and bite freely in the summer season, but retire into deeper water during the colder months of the winter, where they might also be caught with the line. Of a calm day it is usual to let the boat drift the ground, which is usually sandy, when occasionally they bite freely. I have often known fifteen or twenty dozen hauled up, and as fast as the line could be put over. They are sluggish fishes, and do not give much sport; the very large ones of 3 or 4 feet in length, which are at times caught with the line, have pretty good strength, but are soon exhausted. The flesh is good, white, firm, and flaky, and is preferred when boiled. Some consider xxxx a fine fish. Certainly its outward appearance when dead does not recommend it.

"The xxx is armed with a double thorn over each gill operculum and which give a bad laceration, afterward accompanied with pain. Care must be taken in removing

them from the hook that these bones do not come in contact; the usual plan is to give the fish a tap on the head with a club for the purpose, hard or gently, according to the size. These bones appear to be lifted at will, to show the anger of the fish, and are about from 1 to 1½ inch long.

These fishes take a bait freely at night. I have seen the deck of a vessel strewn with xxx after a couple of hours fishing. Three or four vessels had taken shelter in Botany Bay, on the south side, from a southerly gale which prevailed. These fishes also appeared to have moved over, from the same cause perhaps, as the place was literally alive with them, and many were captured with hook and line on that occasion, but no very large ones were caught; they appeared to be all young fishes about 18 inches and some 2 feet long."

From *Fish and Fisheries of New South Wales* by the Rev. J. E. Tension-Woods, F.L.S., F.G.S., &c., &c., 1882

## Or this might be easier

Depth 8.50-9.00, head 3.50-3.75 in length with tail. Head width 1.80-2.00 in its length. Eye 6.66-7.33 in head, 1.80-2.00 in snout, which broad and depressed, rounded in front, length one-fourth head. Interorbital slightly concave, 1.10-1.33 in eye. Upper surface of head flat. Preorbital with two short, stout blunt spines directed forwards. Upper surface of head of head flat. Opercle with single weak spine. Preopercular spines slightly divergent, lower longer,  $\frac{2}{3}$  in eye. Maxilla with broad band villaform teeth and short canine at inner angle of symphysis, on each ramus, and several pairs similar but with smaller teeth in front and outside. Mandible with narrow band villaform teeth in front, inner row short sharp teeth continued back to maxillary bands. Two small patches

villaform teeth on vomer, connected mesially, terminating either side in three strong conical teeth. Single series conical teeth on palatines. Two partially isolated spines before D., 1<sup>st</sup> minute, 2<sup>nd</sup> 5.50 in succeeding spine, which 2.00-2.15 in head. D. II + VII: I, 13, anterior ray longest, unbranched. A, 13, 4<sup>th</sup> ray 1.33 -1.50 in head. P, 19 -20, rounded, 2.20-2.30 in head. V, I, 5L. lat. about 100. (Ogilby, 1893)

From *Guide to Fishes*, E.M. Grant, M.Sc. Senior Fisheries Biologist, Department of Primary Industries, Brisbane, Queensland. Second Edition 1972.

Entries to the editor please—need scientific name as well. Answers next month.



## GREAT HOLIDAY VENUE—SOUTH WEST ROCKS N.S.W

Just 6 hours from Sydney on the North Coast between Port Macquarie and Coffs Harbour is this picturesque fishing mecca. The weather in general is a few degrees warmer than Sydney at the same time of year.

There is a River Bar exit to the ocean a shallow boat ramp at Trial Bay and a Back Creek ramp for small boats. This means all varieties of fish can be sought.

Horseshoe Bay is beautiful, shallow and protected from the wind, suitable for families with small children. There are scenic walks through the National Park, historic Trial Bay Goal, scenic views from Smokey Cape lighthouse, duck sanctuary at Little Bay, small museum and craft shops, all within easy walking distance.

There is a large Coles, an IGA supermarket, Crazy Charlie's variety store, camping and caravanning supplies, gelateria, liquor outlets, picture theatre, bike hire, tennis courts and golf course. There are plenty of eating places for any budget. The Pub and Riverside Tavern are family friendly, the Country club offers both buffet and a la carte.

There are daily River cruises and several charter boats for deep sea fishing trips. A new tackle shop has opened.

Three Motels and lots of rental accommodation, medical centre and now an ambulance depot. Kempsey is only an hour away, has a bus linking service to the Rocks from the railway station.

The Co-op sells fresh local oysters, prawns and fish. Trial Bay Kiosk serves great coffee and scones. Vic Grezel services boat motors, is an ANSA member and full of local knowledge, and always ready to help out whatever the problem is.

April-May is great time for run of Spotted Mackerel. Many families from our club venture there annually. Why not join then for a great holiday.

Just ask anyone if you want more information. HAPPY HOLIDAY





# ANSA N.S.W 12 MONTH COMPETITION ENTRY FORM



Date Received by State Recorder: \_\_\_\_/\_\_\_\_/\_\_\_\_

Angler: \_\_\_\_\_ Club: \_\_\_\_\_

ANSA No: \_\_\_\_\_ DOB (jnr & sub-jnr): \_\_\_\_\_ Phone: \_\_\_\_\_

## Weight Captures:

Was Pre-Test or Factory Pre-Test line used in these captures (circle) **Yes / No**

If Pre-Test or Factory Pre-Test line **was not used** in the captures, a 5 metre line sample must be provided with this entry form.

Species	Capture Date	Capture Location	Weight	Line Class	Division 1-15

## Tag & Release:

Species	Capture Date	Capture Location	Tag Number

## Length Captures:

Species	Capture Date	Capture Location	Division 17-25	Length (mm)

## ANGLERS DECLARATION

I \_\_\_\_\_, declare that this capture was made by me, and weighed or measured on an appropriate device, in accordance with ANSA rules.

Signed: \_\_\_\_\_ Date: \_\_\_\_\_

## WITNESS TO WEIGHT / MEASUREMENT

I \_\_\_\_\_, certify that I witnessed the weighing or measuring of the capture.

## CLUB RECORDER

I \_\_\_\_\_, declare that the captures listed above have been authenticated in accordance with ANSA rules.

## Notes for LENGTH captures:

1. Fish to be measured length overall i.e.: end of tail to the leading edge of the jaw, fish laying flat and tail in a natural position.
2. If no witness to length only measurement, a photo of capture on an appropriate measuring device must be submitted.
3. Preferably all claims should be accompanied by a photo of the fish on the appropriate measuring device. Video is acceptable.
4. One entry, per division, per angler, per year across divisions, upgrading of fish is acceptable.

## Eligible Divisions for 12-Month Comp:

- |  |                              |                                       |
|--|------------------------------|---------------------------------------|
| 1. Land Based <b>Game</b> Species (Sport / Gamefishing capture method)       | 9. Flyfishing Freshwater     | 17. Length Only Carp (All)            |
| 2. Land Based <b>Non - Game</b> Species (Sport / Gamefishing capture method) | 10. Gamefishing              | 18. Length Only Trout (All)           |
| 3. Sportfishing in Saltwater Estuaries & Saltwater Lakes                     | 11. Handline                 | 19. Length Only Bass (Australian)     |
| 4. Sportfishing from a Boat (outside)  | 12. Capture by a Lady        | 20. Length Only Bream (All)           |
| 5. Sportfishing Freshwater   | 13. Capture by a Junior Boy  | 21. Length Only Flathead (All)        |
| 6. Lurefishing Saltwater   | 14. Capture by a Junior Girl | 22. Length Only Salmon (Australian)   |
| 7. Lurefishing Freshwater  | 15. Capture by a Sub-Junior  | 23. Length Only Kingfish (Yellowtail) |
| 8. Flyfishing Saltwater  | 16. Tag & Release            | 24. Length Only Snapper               |
|  |                              | 25. Length Only Mulloway              |

## General Notes:

1. Each fish submitted may only be entered in **one** of the eligible divisions 1–25 above.
2. Fish submitted for Weight Captures, cannot be submitted for Length Captures and vice versa
3. To be eligible all 12 month competition entry forms must be with the state recorder within 35 days from date of capture

01/07/2016

## ST GEORGE SFC - LENGTH ONLY COMPETITION - RULES for 2016/17

Throughout 2016/17, all members of St George SFC are invited to participate in a Length Only Competition. There will be two separate divisions:

Division 1: Combined length for Flathead, Snapper and Salmon

Division 2: Combined length for Bream, Whiting and Tailor

The competition will run from 1 July 2016 to 30 June 2017. Only captures made within the 12 month period of each year's competition are eligible for inclusion.

Entries should be made using the form below, and forwarded to the Club Recorder within 35 days of the capture. Entries must be received before 14 July 2017.

Members can upgrade their entries at any time throughout the year so that only their longest capture for each species remains current.

There are no restrictions on line class.

All captures entered must be legal size.

All captures must be made in NSW or ACT waters.

Capture and release fishing is encouraged but not necessary for this competition.

There will be an overall prize in each division for the longest **combined length** of an angler's best capture of each species, i.e. a prize for the longest combined length of Flathead, Snapper and Salmon and a prize for the longest combined length of Bream, Whiting and Tailor.

**Example:** If a member's best capture of each species over the year is a Flathead of 680mm, a Snapper of 450mm and a Salmon of 530mm then their **combined length** in Division 1 will be 1,660mm.

A certificate and two 'Champion Angler Points' will be awarded to the winner of each **species category**. No additional points awarded for the overall combined length winner.

If you have any questions, please ask.

Belinda

---

### ST GEORGE SFC – LENGTH ONLY COMPETITION - 2016/17

Angler	Species	Capture Date	Capture Location	Length (mm)

Signed: \_\_\_\_\_



# Seabird of the Month



## Wilson's Storm-Petrel *Oceanites oceanicus*

**Appearance.** Storm-Petrels, the smallest of the seabirds, are related to the true Petrels and Shearwaters. Wilson's Storm-Petrel has an overall length of about 18 cm and a wingspan of 40 cm. Average body weight is only 40g, making it the smallest warm-blooded animal to breed in the Antarctic region. The body and wings are sooty brown, with a lighter brown band across the inner wings. The most notable feature is a prominent white patch on the rump. Unlike other Storm-Petrels the webbing between the toes is yellow. All Storm-Petrels have a steep, high, forehead.

**Habitat and range.** Wilsons Storm Petrel are one of the most numerous birds on earth, with the population estimated at 12 to 30 million pairs. In our summer they inhabit the Southern Ocean from the edge of the ice northwards. As winter approaches they migrate north with many crossing the equator into all the northern oceans, occasionally as far north as Great Britain. Most Australian records come from the edge of the continental shelf or further offshore.

**Breeding.** November to May in Antarctica and sub-Antarctic islands. Large colonies nest in burrows or crevices. To avoid predation by Gulls and Skuas the parents only visit the nest at night. A single egg hatches in about 50 days and the chick fledges in another 60-70 days.

**Feeding.** The diet consists of planktonic crustaceans and molluscs, larvae of various species, small fish and oil droplets resulting from the predation of larger fish. They sometimes patters across the surface when feeding.



*Roger Giller*

