



St George Sportfishing Club

Newsletter — March 2015 - Issue 510

Contents:

The Ear - beware, he is watching and listening, he is everywhere, everywhere, everywhere, everywhere.....

Coming events

The News

Fishing Reports

From the Fishing Recorder - who has caught what

Waterbird of the Month - from Roger Giller

Birthday people for March

Coming Events full details page 2

- Sun 1 Mar **Clean up Australia Day**
- Thu 5 Mar **General Meeting** at the Masonic Club, 7.30
- 6-8 March **Narooma Sportfishing Convention**
- Sun 15 Mar **Club Botany Bay outing**
- Sun 22 Mar **Sydney Tournament set up 1pm**
- Mar 27-28 **ANSA Sydney Tournament**
- Sat 28 Mar **Don't forget to vote**
- Thu 2 Apr **General Meeting** and guest speaker
- 18/4-9/5 **South West Rocks**

Hawkesbury Nepean Interclub has been cancelled.

The News full details page 4

- 2015 Club Calendar available (printed in here, cut it out and stick on fridge door) - page11
- New Saltwater and Freshwater Guides now available
- Georges River fish kill
- Are your shackles (trailer to car) legal?
- Angel ring recovered by tracking device
- Recent fish stockings announced
- Australia Day fish kill in Macleay River
- Are your scales up to date?

The EAR



The Ear is saddened to hear that Phil Turner and Arthur Zac have lost their mothers in the past two weeks. Our condolences to you both and your families at this tough time.

Now a beach (and rock) fishing nut tried Wanda beach during the month. His wife at a loss of what to do on this fine day accompanied him. And went for a swim in the surf—not between the flags it must be noted. The fishing was a bit slow and our man happen to look up the beach to where this illegal surfer was swimming to see her bowled (his words) over by a wave. Now he thought— I'll see if she comes up before I waste this bait. He looked to see if there was anyone around that could lend a hand (there wasn't) he waited and waited and as he was resigned having to go to the rescue up she bobbed. Phew he thought, that was close.

Now, hot on the ball our LFE (large flathead expert) phoned our last month's speaker XSO (ex safety officer) and set him straight about the size of the opening in a bait (poddy) trap. Our XSO advised the meeting (with great authority) that the opening was to be no larger than 90mm. The LFE set him straight the following morning (before 8am)—the opening should be *no larger than 60mm*. The official correction/retraction/apology/regret/confession/contrition/excuse/defense/explanation/justification/refutation/withdrawal/forgiveness/guilt is around here somewhere.

Continued on page 3

Birthday people for March

- | | |
|-------------------|------------------|
| 1 Peter Logan | 12 Jenny Webb |
| 6 Don Rayment | 12 Bruce Rayment |
| 8 Brendan McMahon | |

Coming Events continued from page 2

Sun 22 Mar **Sydney Tournament set up.** Do you fancy yourself as being an **expert tent putter—uppera**? If you can spare an hour or two on Sunday 22 March to assist please come along to Souths club at 1pm.

Mar 27-28 **ANSA Sydney Tournament.** This is an annual event being the 22nd year. Clubs from around Sydney, south and north of Sydney attend to fish Sydney and enjoy the camaraderie. Great meals are provided for participating contestants, beginning with a free BBQ on Thursday evening, the start of the registration—all participants must be registered. Registrations close 14 March for catered entries. Cost include Friday dinner, Sat and Sun breakfasts, Saturday lunch, (sandwiches), Saturday dinner and Sunday BBQ. The fishing boundaries are; north to the Hawkesbury, south to Stanwell Tops and east to the 152.10 East line (wherever that is).

Thu 2 Apr **General Meeting** and guest speaker - not sure who this is at the moment but be assured it will be great. Come along and enjoy the meeting. Supper provided—no charge. Lucky door prize will be running—sign the attendance book at the meeting

18/4-9/5 **South West Rocks** here is Mary and Phil's enthusiastic invitation—see page 13

The EAR from page 1

It seems the **dead-man switch** has plagued one of our members again — this time at Sussex and the incident resulted in lost fishing time (2 hours) and an extremely red face. In cases like this it is customary to lay the blame elsewhere, anywhere. The problem in the end, after lots of advice and suggestions from onlookers, was solved by the local outboard mechanic. The dead-man switch had been activated and doing what it was designed to do!

A member **heading south to Sussex last weekend** when approaching fog on the top of the escarpment, switched on his fog lights—(these new Nissans have all these gismos) and the brake warning light came on. He stopped by the road with hazard lights flashing to collect his scattered thoughts. He scratched his head and thought why is this so? He started the engine and switched them on again and the same happened.

The EAR continued from previous column

Dilemma — proceed to Sussex with the brake light on or... He decided to give Sussex a miss and proceeded a little further to where he could turn around for home. Unfortunately the road he now found himself on was the Appin/Picton road. They had a nice scenic and long trip home. As of the time of writing a new wiring harness has been ordered for the trailer.

THE apology..

CORRECT AN INCORRET STATEMENT (sic)

I mention at the last club meeting that a live bait trap can have an entrance hole of 90mm.

This is incorrect. It is to be a minimum of 60mm.

Extract from Fisheries Saltwater Fishing Rules Page 4

You can only use or have in possession one trap at any one time.

The maximum dimensions of a bait trap are 450mm length x 350mm diameter with entrance funnel no larger than 60mm in diameter.

The trap must have a tag attached to a part of the trap which is at or above water level with dimensions not less than 80mm x 45mm, with BT, initial and surname, year of birth (YOB) and postcode of the person who sets, uses or lifts the trap, all letters to be a minimum of 15mm and in a colour contrasting to the tag
I had this copy with me at the last meeting and still didn't get it right.

My thanks to Ron Camp who queried the 90mm measurement.

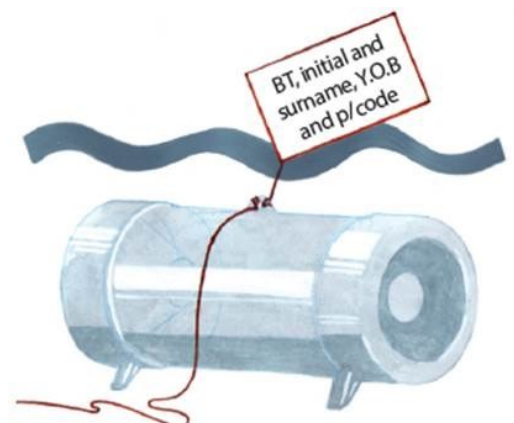
I looked it up in the rule book the next day and realised that it was wrong.

I rang Ron and informed him of my error.

NOTE. The tag can float or be a flat piece of plastic attached to the trap.

The Initials B.T must be used so it defines this trap as a Bait Trap not a e.g L.T. or C.T etc which are lobster or crab traps.

Chris Holland



Coming Events — the detail

1 March — **Clean up Australia Day**

Thu 5 March — General meeting where Brad Sutton will be talking Bass fishing. Brad along with Ray Agius has fished the Hawkesbury Nepean Bass Interclub Comp. for a number of years now will be giving some of his secrets away. Brad has fished around Sydney for both Bass and their close cousins the Estuary Perch and has some tips for trying local spots. A talk not to be missed, bring a note book.

6-8 March—**Narooma Sportfishing Convention**. First run in 1969 this is the first of the great ANSA Conventions. Excellent blue water fishing around the fabled Montague Island, estuary fishing, beach and rock are all available. Start is early (very early) 12.01am Fri 6 March to 1pm Sun 8 March
Cost: Fully catered (all 7 meals) \$50 Senior \$20 Junior \$100 Family
Uncatered (no meals, entry only) \$20 Senior \$10 Junior.
More details and **Application Forms** will be available at the next (March) meeting.

15 March—club outing, **Botany Bay**. This will be discussed next meeting. But generally (weather permitting) launch wherever at your convenience, meet for lunch and weigh-in at Bonna Point boat ramp, Kurnell at 12.30— there are toilets there. Suggested fishing spots are Molineux Point, drifting the channel just outside Wooloware Bay or around the goal posts,. Outside fishing at the FAD at 33° 59.316' S, 151° 20.951' E. The FAD is in 98m of water and 9.5km from the Bay. Use baits of squid or pillies and plastics for flathead and trevally. Try blood worms for whiting and bream. Add your name to the outings list so that if the committee call the outing off you can be notified. Tides for the day will be LT 10.35am and HT 4.56pm. Use 940 on your radio to stay in touch.

continued page 3.

from our President

As I write this, a number of members are heading north to Lake Macquarie to “test the water” prior to the Swansea weekend.

It is that time of the year when there are activities on most weekends, either Club or ANSA Comps such as Narooma, Botany Bay and the Sydney Tournament. With only two members fishing Narooma at this stage it is not too late to register for what is shaping up to be a top weekend.

The Comps in particular present opportunities to show SGSFC members as keen participants, hopefully with top captures and/or release of fish.

As we have a significant role in the Sydney Tournament, where our club is responsible for the meals. Volunteers are required to assist particularly with set up and cooking, in addition to other associated support. Peter Logan has roster sheets with details. By allocating a time for support it also permits a time (or times) to fish.

Any assistance is and will be greatly appreciated.

As mentioned at the February meeting, the first 30 members to participate will receive a BUFF (*for sun protection of ears, face and neck*) courtesy of ‘*Talos Insurance and Risk Solutions*’.

Thank you Andrew for this sponsorship of SGSFC members.

Good luck to those heading to Swansea and Narooma and

Good fishing

Dennis

Our Committee

President Dennis Simpson 9543 0949

V President Peter Logan 9520 3298

Secretary John Everett 9522 4808 (note that I had it wrong last month)

Treasurer Chris Holland 9872 5517

Recorder Belinda Rayment 0407 337 770

Outings to be advised

Committee Andrew Perros

Non Committee;

Scale verifier Phil Turner

Newsletter Clark Kent (C/-Bill Harvey) 9533 2453

The News - the detail

NSW Fisheries

The latest NSW Fisheries **Saltwater and Freshwater Guides** and the **long sticky rulers** are now available following the outcome of the survey last November. There will be



sufficient copies on the table at the next meeting. Copies are also available at your local tackle shop and expected to be in the Sydney Tournament sample bags.

Georges River fish kill



The NSW Environment Protection Authority is investigating the cause of a massive fish kill in the Georges River near Liverpool that has resulted in four tonnes of dead fish being hauled from the river. Inspectors are continuing to take samples from a storm water drain at Moorebank, which appears to be the source of the deadly contamination.

"The fish kill was first reported to the EPA's Environment Line on Saturday morning by a local fisherman," an EPA spokeswoman said. Hundreds of dead fish of mixed species started to turn up in the river.

A subsequent storm on Sunday afternoon resulted in white foamy water flowing into the river from the storm water drain.

"The EPA has carried out extensive testing and the results show that the white foam which was present on the water at the time of the incident was highly toxic to aquatic life," the spokeswoman said.

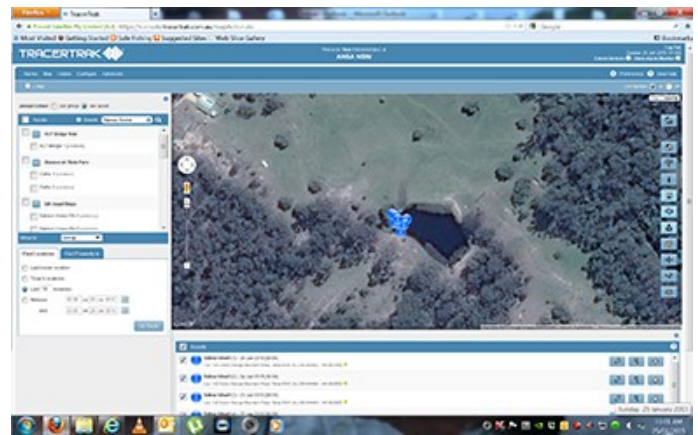
"People are advised to avoid contact with the river between Liverpool Weir and the Casula Powerhouse," the EPA said. The public is also advised to avoid eating fish from the river.

Further sightings of dead fish should be reported to the Environment Line 131 555.

Tathra angel ring recovered by tracking device

An angel ring at Tathra was stolen a few weeks ago. What the thieves didn't know was that the angel ring had a hidden tracking device in it, and Stan Konstantaras tracked the missing angel ring using our tracking app to a dam on a farm nearby.

Here's what he saw on the tracking app...



A quick call to police at Bega (who were very annoyed about the theft), who made a visit to the property, resulted in a \$300 fine being issued and the angel ring being recovered and put back on its post. Police said they initially wanted to take it further but felt sorry for the old lady on the property who said a friend had "found" the angel ring and dropped it off in her dam.

Angel Ring used to rescue boy

A 10-year-old boy was washed from the Evans Head breakwall in recent heavy weather and saved by bystanders who threw him a bucket and then an Angel Ring attached to fishing line. He was then able to be brought to shore. The boy was playing in the storm-swell waves along the wall when he was washed in and pulled 20 metres out to sea by the strong outgoing tide.

Despite the recent heavy seas on the north coast caused by tropical cyclone Marcia and a coinciding king tide, this was fortunately the only incident on the coast.

Article from the Recreational Fishing alliance of NSW

From the **Queensland TMR, (Transport & Main Roads) Safe Towing publication 2014**

"Safety Chain Connections (Shackles) TMR requires that "D" Shackles, used to connect a trailer safety chain(s) to the towing vehicle, must have strength that is compatible with the safety chain (fit for purpose). This can be ensured in a couple of ways:

1. Use of "D" Shackles that comply with AS 2741-2002 "Shackles" and having the appropriate markings is one way. TMR recommends this method.
2. Another way of ensuring that the "D" Shackle used is of appropriate strength is to select a "D" Shackle of reputed brand (for example, a towbar manufacturer) so the part has its brand name/model permanently marked on it. "D" Shackles that do not have any markings make it difficult to identify their source and strength and may raise questions during any roadside audit by enforcement officers. Safety chain strength is specified in terms of minimum Proof Load in kN. Proof load is defined in AS 4177.4-2004 as "The load which chain must be able to withstand, while remaining in service". D shackle strength is specified in terms of Working Load Limit (WLL) in kN. Working Load Limit is defined in AS 2741-2002 as "The maximum load that may be applied to the shackle, which may be re-rated for particular conditions of use". As you can see, the definitions for Proof Load and Working Load Limit (WLL) are similar. In other words, WLL is to D shackle what Proof Load is to safety chain.

With this in mind, the following table can be drawn:

Trailer	Chain Size	Chain min	D Shackle	D Shackle
ATM	classification	proof load	Size	Working
kg	n (kg)	(kN/t)	Classification	Load Limit
	AS 4177.4-	(Strength)	AS 2741-	(WLL in kg)
	2004		2002	(Strength)
1-1000	1 000	4.9/0.49	6mm, 8mm	500, 750
1001-1600	1 600	7.9/0.8	10mm	1000
1601-2500	2 500	12.3/1.25	11mm	1500
2501-3500	3 500	17.2/1.75	13mm	2000

Table 1 - Safety Chain Shackle Matrix (Guide only)

Note:

- Pin diameter of shackle will be greater than the diameter of the main shackle body.
- Same size shackles of different quality grades will have a different WLL (i.e. 6mm "S" grade shackle has a greater WLL than a 6mm "M" grade shackle). • Stainless steel shackles are unsuitable for trailer use due to the material's general low resistance to bending stresses.
- Bow shackles provide for greater angular usage compared with "D" shackles. "

The News - there's more

Are you shackled up—correctly ?



Our thanks to Lawrie Webb for the above gem.

As well, our president was in South West Rocks last week (family matters he reckons) and advises a new copper in town (from the Highway Patrol it seems) is booking vehicles while parked at the boat ramp for having

'unsuitable' shackles, that is, the connection of the trailer chains to the towing vehicle.

From the **NSW Roads & Maritime Safer Towing Guide**, the document states;

"Towing coupling

All couplings:

- Must be strong enough to take the weight of a fully loaded trailer.
- Should be marked with the manufacturer's name or trade mark and rated capacity.

Must be equipped with a positive locking mechanism. The locking mechanism must be able to be released regardless of the angle of the trailer to the towing vehicle.

Safety chains

- Must comply with Australian Standards.
- Trailers less than 2500 kg when loaded must be fitted with at least one safety chain.
- Trailers over 2500 kg when loaded must be fitted with two safety chains.

To prevent the front end of the drawbar from hitting the ground if the coupling is disconnected, safety chains must be:

- As short as practicable and connected to the towing vehicle.
- Crossed over if two chains are fitted."

What does all this mean?

It is worth checking your tow bar rating and actual load of the rig including fuel and stuff we usually carry, maybe over a weigh-bridge if necessary, or

If you have an idea of the trailer weight, the boat weight and engine (with some allowance for stuff), from the Table opposite, the shackle size can be established.

Purchase a rated shackle (it will probably be painted yellow) and fit it. (Ed)

Fishing Reports

SUSSEX SNIPPETS

It was not such a good weekend of fishing for Carol & I at the Nowra Convention. We fished Friday the first day of the competition for one 32 cm Bream on 1kg, weighing in at 0.48 Kg and four Flathead with the biggest fish on 2kg at 58cm, weighing in at 1.07kg. The surface water temperature varied between 25 & 27 degrees.

Carol & I then fished the following day for four small Flathead between 38 & 42 cm plus a lot of throw backs. Saturday evening I fished with James Rayment for one 35 cm Bream on 1 kg and three Flathead to 59 cm. The largest fish weighed in at 1.14kg. After consulting the score board, neither species of fish were in the top 5 of the Estuary category and therefore would not score points for the club, so I entered them in the longest Bream and longest flathead categories. I ended up equal first for the longest Bream but lost on a count back when the placing went to the first fish weighed in. I did however win the longest Flathead category.

The St. George club came 4th overall . We need more people from our club to fish, especially in the Ladies, junior & sub-junior sections. Congratulations to Karen Maltby who took out the Champion lady category

I would like to commend James Rayment also for fishing over 14 hours straight on the Saturday and heading outside early to the Banks on the Sunday morning, in an attempt to take out all of the points in the junior section. Unfortunately he scored some placing's but not enough to beat the pelagic fish caught in the entrance of the Crookhaven River by opposing juniors.

The winning Champion Club was "Happy Hookers" who I think had 5 people fishing. Four were from the one family made up of a Mum, Dad, a junior and a sub-junior.

With regards to the current status of fishing in the Basin, There are good catches of Bream coming in on lures in the deep water however the Flathead and Reddies are playing hard to get. The odd Jewfish are still being caught the last one caught at night. Luderick are starting to show up in numbers so I hope to get out in the coming week to catch a few. There has been no problem picking up local green weed however I hope the hot weather and rain has not killed it off for the moment.

Tight Lines

Jimmy Olsen

Lucky Door Prize

Peter Logan won the Lucky Door Prize *again last month*—a nice leg of lamb. Don't forget to sign the attendance book on the way in to the meeting to be in the draw.

From Ron Camp...

Fished Nowra Comp on weekend for very ordinary results.

I stayed with Dave and Karen Maltby at their house, along with John Everett and Trevor Dean.

Friday. Karen fished with me in my boat and I caught a 72mm flathead that went about 2.2kg which came 4th in Estuary division and a 0.9kg tailor.

Saturday. Only a 45cm and 66cm flatty.

Sunday morning. Did no good at all.

Very difficult conditions as we were completely becalm each day until lunchtime with no drift at all. Terrible to complain about weather being too good.

Karen took out 1st in ladies and we came 4th overall.

No photos I'm afraid.

Ron

And from Phil McDonald...

The lake is fishing quite good at this time. There is lots of squid being caught, the drop over is firing

The best colour is green's and blue in 1.5 to 2.0 size.

Flathead and bream along with some nice jewfish are being taken on lures.

Little bit of trivia,

Number of casts per fish caught,

A friend just came back from Lake Mulwala cod fishing in the Australian casting championship.

They caught four fish in four days.

We then calculated how many casts per fish.

Number of casts per minute. Average 2.per minute

Number of hours fished per day - 10hours.

When we had finished it was 1234 casts per fish.

Also my mate missed out on the fish as his partner caught all four fish.

Phil

From Jeff Tabley....

Hi Bill,

My latest trip was last weekend up to the Foster where I fished the Wallamba River and got a PB flathead

I hooked 4 ranging from 30 to 85 cms and kept a smaller one for dinner

The water has been very dirty from the runoff in all the rivers up here but I have heard a few good fishing reports such as squid at the drop off which can then be floated in the current down at the Swansea bridge for kings (mostly undersize but a few up to 90 cms)

Before the rain over the last week, I have been fishing around Swansea fruitlessly but I am learning and my next trip will be to the dropover in the lake. I hear there are squid and plenty of fish in the vicinity. A surfing buddy of mine got an 18kg jewie in the middle of the day while squidding at the drop over in the middle of the day. Again on a live squid.

Jeff

Recent fish stockings announced

The Department of Primary Industries' (DPI) four hatcheries plan to produce and release a total of more than 4 million fingerlings and fry by the end of summer.

NSW Primary Industries Minister Katrina Hodgkinson said over one hundred popular fishing spots across NSW will benefit from the DPI's fish stocking program this season.

"Throughout the 2014-15 fishing season, DPI plan to stock NSW public waters with around 60,000 Australian bass, 240,000 Murray cod, 650,000 golden perch, 225,000 silver perch, 150,000 Atlantic salmon, 560,000 brown trout, 100,000 brook trout, 24,000 trout cod and 1.9 million rainbow trout," Ms Hodgkinson said.

"At the Narrandera Fisheries Centre, around 1.2 million Murray cod, golden perch, silver perch and trout cod will be produced for dams and rivers from Albury all the way to Inverell.

"The DPI hatcheries in Gaden and Dutton produce all trout that are stocked into our waters, while the Narrandera and Port Stephens hatcheries produce native fish for stocking primarily into dams and lakes." Ms Hodgkinson said that DPI, in conjunction with local acclimatisation societies, has been successfully stocking freshwater fish in dams and rivers in NSW for many years.

"The DPI's fish stocking program is recognised for the benefits it provides to local communities by improving recreational fishing, ensuring conservation of certain species, and providing employment and tourism to regional areas," Ms Hodgkinson said.

"The fish stocking program is another great example of how the funds raised through the NSW Recreational Fishing Trust is invested back into projects and initiatives that directly benefit recreational anglers."

Fish kill reported in Macleay River

THE first major fish kill of the New Year has been reported with a branch of the lower Macleay River now closed by the NSW Department of Primary Industries (DPI).

A DPI spokesperson told The Macleay Argus the DPI was working closely with Kempsey Shire Council and Local Land Services to investigate the fish kill.

"It is difficult to determine exact numbers in fish kills, however initial observations have estimated approximately 2000-plus dead fish," the spokesperson said.

"Very low dissolved oxygen levels in the waterway are the most likely reason for the fish kill.

"These conditions are common when heavy rains inundate the floodplains."

The DPI spokesperson said flooded pastures rot or decompose in warm weather conditions and this process strips oxygen from the overlying water.

"Three days of hot sunny weather is enough to reduce oxygen levels to critical levels, which can result in fish kills," the spokesperson said.

"The DPI is monitoring the scale and extent of the fish kill with the assistance of the North Coast Local Land Service staff and Kempsey Shire Council is continuing to monitor water quality."

North Coast Local Land Services senior officer Max Osborne said the whole area has been devastated and was now dead.

"The standing water from the pre-Australia Day rain event remained on the floodplain over the Australia Day long weekend," Mr Osborne said.

"That was a long enough period for pasture grass and semi-aquatic plants to become submerged, die and then rot.

"During decomposition of this organic matter bacteria consumed the oxygen in the water.

"In addition to this deoxygenation, a complex series of chemical reactions occur, particularly with the soil, which also consumes dissolved oxygen from the water column.

"These processes add a cocktail of chemicals to floodwaters, changing acidity and heavy metal levels, and other important water properties.

"Due to this a wide variety of aquatic organisms perished including worms, crabs, prawns and fish."

Australian Marine Alliance representative and local commercial fisherman Nathan Neilly told The Macleay Argus the fish kill started nearly two weeks ago, on Australia Day.

"I was working in the actual part of the river that the NSW DPI has now closed," Mr Neilly said.

"It's on the Clybucca and Anderson branch that goes out towards Rainbow Reach to the flood gates at the top end of Clybucca towards Collombatti."

Mr Neilly said the area generally had a "blackwater" event every couple of years, if not every year, because of the heavy rains.

"The water is putrid," Mr Neilly said.

"It's just rotten vegetation that has broken down and because of the heavy rains it's bringing a lot more stuff down into the river than it normally would.

"I was there when it first started happening and from what I saw you'll find a lot of mullet, black-fish, flathead, garfish and whiting have died."

HARRINGTON



By
Debbie
Logan



Harrington is a small fishing village located at the mouth of the Manning River. It is 15km north

east of Taree. Peter and I own a permanent holiday van in the Big 4 Park and spend a lot of time there (well mainly me).

The best thing about Harrington is the "FISHING". There are lots of fishing spots there....The Breakwall (my favourite), Harrington Beach, Crowdy Beach, the Manning River, the Lagoon, Manning Point and outside fishing from Crowdy (to name a few).

Over Christmas Peter and I fished Harrington Beach to catch some great Salmon to 63cm and I caught a 69.5cm Tailor. Off the Breakwall we got into the Bream and Flathead. Peter caught a nice Mulloway drifting the spur over at Manning Point.

Here are some photos of Peters' fish caught over Christmas. See page 9 Ed

G'day Bill,

Top day off Sydney on Sunday 8th on Avalon. It was a slow morning but things started to amp up when we crossed the 95 fathom line into the 4 knot south current. Within 2 minutes we had a Shortbill Spearfish strike that then jumped and threw the hooks, then a while later we found good sized Dolphinfish under some flotsam. 7 cows caught all over 80cm including a PB 115cm, 7kg fish for James before we lost them on the current.

Regards,
Bruce.

Hi Bill,
Just back from the ANSA Nowra Comp. We only fished Saturday and Sunday morning this year, and not on Friday due to school and work commitments. Saturday produced 10 Flathead and a Bream between James on Beakie and Belinda and I Avalon. I scored the biggest Flathead of the day, a 69cm, 1.94kg model on 1kg - 1cm short of being my 10th Trophy Length Masters fish. This only ended up placing me 5th in Estuary. James' Flathead ended up 3rd and 5th in Junior. Sunday morning James and I headed to the Banks trolling 2kg for Striped Tuna - which we found, but they were small and not big enough to score placings.

Regards,
Bruce.

Hi Bill,

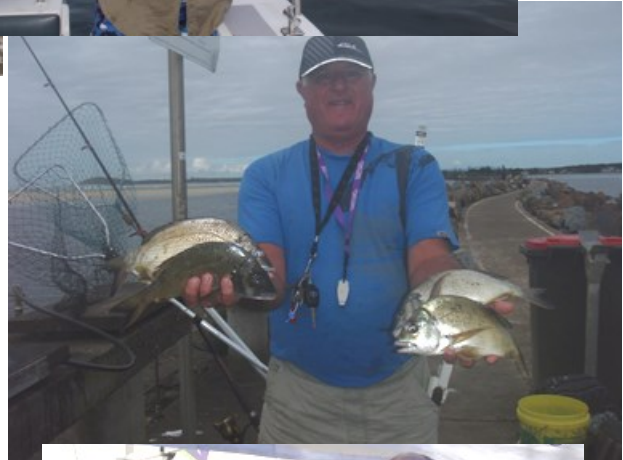
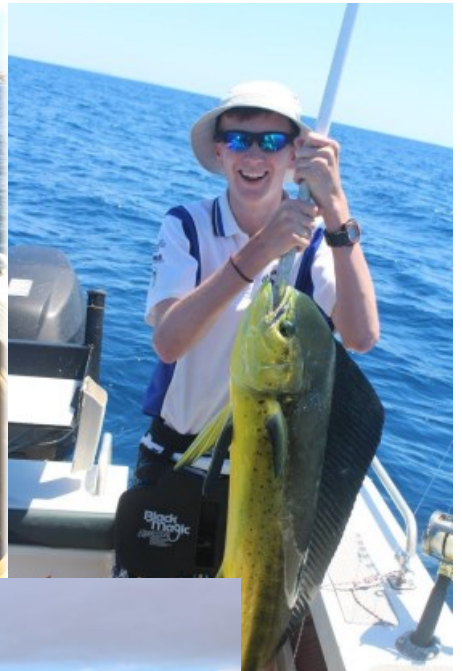
Sorry we haven't been fishing, nothing to report.

cheers,

Yves

ARE YOUR SCALES UP-TO-DATE?

Scale No.	Type	Weight Class kg	Member	Verification to month 2015	Scale No.	Type	Weight Class kg	Member	Verification to month 2015
4	Berkley	0-23	B Moores	Feb	78	Rapala Dig.	0-14	N Wilson	Dec
12	Salter	0-100	P Worsley	July	84	Rapala Dig.	0-25	P Logan	Feb
26	Salter	0-50	P Hewitt	August	90	Rapala Dig.	0-50	E Dhyon	July
27	Salter	0-20	P Hewitt	March	93	Weiheng	0-25	P Turner	August
28	Salter	0-25	P McDonald	April	94	Weiheng	0-25	R Camp	Sept
29	Salter	0-10	P McDonald	May	95	Weiheng	0-25	D&K Maltby	Sept
32	Salter	0-20	A Zacharias	Feb	96	Weiheng	0-25	D&K Maltby	Sept
33	Salter	0-22	P Mortel	Aug	97	Weiheng	0-25	D&K Maltby	Sept
54	Rapala Dig.	0-25	P Turner	Feb	98	Weiheng	0-25	D&K Maltby	Sept
55	Rapala Dig.	0-23	H Giller	Aug	99	Weiheng	0-25	B Harvey	Sept
57	Rapala Dig.	0-50	B McMahon	July	101	No name	0-40	R Camp	Feb
62	Rapala Dig.	0-25	P Logan	Dec	102	Black magic	0-25	A Perros	March
63	Rapala Dig.	0-25	P Logan	March	103	Weiheng	0-25	B Rayment	July
					104	Weiheng	0-25	B McMahon	Sept



CLUB RECORDER'S REPORT - FEBRUARY 2015

Certificates awarded at January meeting, events between 16 January and 28 February

ANSA's Nowra Convention was held over the weekend of 20th to 22nd February, with St George finishing 4th overall. The following anglers were awarded 3 CAA points for fishing:

Hayden Ayres, Peter Ayres, Ron Camp, Trevor Dean, John Everett, Lua Fakaua, David Maltby, Karen Maltby, Belinda Rayment, Carol Rayment, Clayton Rayment, Don Rayment, James Rayment, and Phil Turner.

If I have inadvertently missed anyone from this list, please let me know as soon as possible.

Further CAA points will be awarded for division places once final results are published:

Congratulations to the following anglers who were awarded **Masters capture certificates** last month:

Ron Camp – Length Only – Mulloway 1,005mm	CAA pts	5
Peter Logan – Gamefishing – European Carp 2.75kg on 2kg (137.5pts)	CAA pts	5
Bruce Rayment – Length Only – Black Marlin 2,800mm	CAA pts	5
This capture was a length only Club Record	CAA pts	3
Bruce Rayment – Length Only – Striped Marlin 2,070mm	CAA pts	5
This capture was a length only Club Record	CAA pts	3
Phil Turner – All Tackle Species – Shark, Bronze Whaler 1,060mm	CAA pts	5
Phil Turner – All Tackle Species – Shark, Bronze Whaler 1,060mm	CAA pts	5
Phil Turner – All Tackle Species – Shark, Bronze Whaler 1,080mm	CAA pts	5
Phil Turner – All Tackle Species – Shark, Bronze Whaler 1,270mm	CAA pts	5
This capture was a length only Club Record	CAA pts	3

CHAMPION ANGLER AWARD 2014/15 - END FEBRUARY

<u>MENS</u>		<u>LADIES</u>		<u>JUNIORS</u>		<u>Non-NSW</u>	
Phil Turner	47	Karen Maltby	11	James Rayment	7	Bill Harvey	16
Bruce Rayment	40	Belinda Rayment	8	Hartley Dhyon	3	Dennis Simpson	8
Arthur Zacharias	13	Debbie Logan	5	Clayton Rayment	3		
Don Rayment	9	Maria Zacharias	3				
Ron Camp	8	Carol Rayment	3				
David Maltby	6						
Peter Logan	5						
Dennis Simpson	4						
Peter Ayers	3						
Hayden Ayers	3						
Trevor Dean	3						
John Everett	3						
Lua Fakaua	3						
Chris Holland	3						

Continued next page

DIVISION 1 - LENGTH ONLY COMPETITION - 2014/15			Updated as at: 28/2/2015	
Angler	Best Flathead - Length (mm)	Best Snapper - Length (mm)	Best Salmon - Length (mm)	Combined length (mm)
John Everett	620	350	-	970
Brendan McMahon	800	-	-	800
Bruce Rayment	690	-	-	690
Debbie Logan	-	-	600	600
Arthur Zacharias	-	-	595	595
Phil Worsley	590	-	-	590
Andrew Peros	550	-	-	550
Andrew Dean	470	-	-	470
Trevor Dean	450	-	-	450
Don Rayment	430	-	-	430
Karen Maltby	-	405	-	405

DIVISION 2 - LENGTH ONLY COMPETITION - 2014/15			Updated as at: 28/2/2015	
Angler	Best Bream - Length (mm)	Best Whiting - Length (mm)	Best Tailor - Length (mm)	Combined length (mm)
John Everett	320	330	410	1,060
Debbie Logan	380	-	400	780
Trevor Dean	330	400	-	730
Karen Maltby	250	410	-	660
Daniel McMahon	260	380	-	640
Brendan McMahon	-	430	-	430
Bob McMahon	-	391	-	391
Barry Moores	390	-	-	390
Ron Camp	-	-	360	360
Andrew Perros	-	340	-	340
Glen Daniels	330	-	-	330
Jake Daniels	325	-	-	325
David Maltby	-	320	-	320
Don Rayment	320	-	-	320

Keep those entries coming in for the **length only competition**. Email or in writing is fine, just so long as you let me know where, when, what and how big the capture was. Remember you can upgrade at any time throughout the year.

Please send all claim forms to me at PO Box 923, Caringbah NSW 1495 or belinda.rayment@bigpond.com

Belinda

2015 Club Calendar

Feb 5
General Meeting & Social Night
Feb 20-22
ANSA Nowra Convention
Feb 28-March 1
Swansea Club Weekend
Mar 5
General Meeting & Guest Speaker
Mar 6-8
ANSA Narooma Convention
Mar 15
Club Outing - Botany Bay
Mar 21
Sydney Convention Set Up
Mar 27-29
ANSA Sydney Convention
Apr 2
General Meeting & Social
Apr TBA
Hawkesbury Nepean Bass Comp
Apr 18 - May 2
Club Social - South West Rocks
May 7
General Meeting & Guest Speaker

May 15-17
ANSA Lake Lyell Convention
Jun 4
General Meeting & Guest Speaker
Jun 21
Club Outing - TBA
Jul 2
General Meeting & Guest Speaker
Aug 6
General Meeting & Guest Speaker
Aug TBA
Club Outing - Whiting Night
Aug 15
Club Presentation Night
Aug 29
ANSA AGM & Delegates Meeting
Sep 3
Club AGM
General Meeting & Guest Speaker
Sep 11 - 17
Club Social - Sussex Inlet
Sep 12
Club Outing - Sussex Inlet Classic

Sep 18-20
ANSA Glenbawn Convention
Sep TBA
St George Oldies and Retirees (OARs) Picnic
Oct 1
General Meeting & Guest Speaker
Oct 16-18
ANSA Tailbango Convention
Oct 17
Club Outing - Snapper Day
Oct 25
Club Outing - Carp Day
Nov 6-8
ANSA Burrinjuck Convention
Nov 5
General Meeting & Guest Speaker
Nov 14
Club Outing - Georges River Murrumbidgee Night
Nov 21-22
ANSA 2-4-6 Inter-Club Competition
Dec 3
General Meeting
Club Christmas Social and Raffle Night



SEA SEA MARINE



SYDNEY SPORTFISHING TOURNAMENT 2015

At this year's 22nd Sea Sea Marine Sydney Sportfishing Tournament we want everyone to be a winner!!!!

Friday Night Lucky Door Prize

Proudly Sponsored by:

Rapala®

The Sydney Sportfishing Tournament, thanks to Rapala VMC Australia has this year put together a LUCKY DOOR prize at the end of the Friday night raffle. One lucky competitor will win a great prize when a name is pulled from the barrel at the Friday night raffle on the 27th March 2015. You must be present at the Friday night raffle to win.

Sunday Presentation Day Lucky Door Prizes

Proudly Sponsored by:



YAMAHA

The Sydney Sportfishing Tournament, thanks to Yamaha Australia has this year put together a LUCKY DOOR prize for presentation day. Names will be pulled from the barrel at the presentation on Sunday 29th March 2015. You must be present at the Sunday presentation to win.

There are plenty of reasons to come to the Sea Sea Marine Sydney Sportfishing Tournament this year. The food is great, the atmosphere is fantastic and there is a heap to win.

We hope to see many of you during the weekend.

This tournament is proudly endorsed by the Australian National Sportfishing Association – New South Wales Branch (ANSA NSW)



Why South West Rocks?

We have made the annual journey to S.W.Rocks in April-May for many years. This is the time for the late run of Spotted Mackerel. Many a Masters fish has been caught and lots of good eating fish to take home. The weather in general has been kind to us, just a few degrees warmer than Sydney at the same time. The river bar most days is passable for the heavier boats, but like all bars, care must be taken. Listen to the locals, watch the water and come and go with the tides.

Some years Cobia, Spanish Mackerel, Yellowfin, Northern Bluefin Tuna, Bonito and Marlin have been around. The River can yield Bream, Flathead, Whiting, Mulloway and Blue Swimmer crabs.

Horseshoe Bay is beautiful, shallow and protected from wind, families with young children love it. It is a long walk along Back Beach to the breakwall, very pleasant in the early mornings for fitness. The walk along the Trial Bay beach to the old historic jail is interesting. Along this beach there can be seen at times bits of old ship wrecks. It is popular for canoeing, sailboarding etc.

The National Park offers scenic walkways, and the Lighthouse at Smokey Cape is illuminating. There is a small museum and craft shop all within easy walking from the Beach.

There are three caravan parks. One at Horseshoe Bay, The Big 4 en-route to the Jail and one near the Back Creek boat ramp. Some have cabins as well as tenting and vans. There are plenty of holiday rental cottages. Hookers, Elders and Rocks Real Estate are on the internet showing all details. There are also 3 Motels. Some charter operators also provide accommodation type packages.

There is a large Coles, an IGA supermarket, Crazy Charlie's variety store, camping and caravan supplies, gelateria, Liquor outlets, picture theatre (for dull days), bike hire, tennis courts and golf course. There are plenty of eating places. The Pub and Riverside tavern are family friendly and of course there are pizza and pasta places. The Country club has both buffet and a la carte.

There are daily cruises along the river on party boats, and several charter companies for daily deep sea fishing for those who don't bring a boat. There are two dive centres for those who wish to see the Grey Nurse sharks in the famous Fish Rock cave, or wish to become "certified".

Port Macquarie and Kempsey are only an hour's drive away. Timbertown is a good day out, as is the Kempsey Cup Race day and the Coffs Harbour Agriculture Show. Crescent Head is also a popular drive. At Ricardo's tomato and strawberry farm you can pick your own and also the Macadamia shop. For the little kids, there is a duck pond at Arakoon with a park full of Kangaroos.

Once a month markets come to town selling all manner of things including local produce, and the bakery makes great cream buns for the Club's picnic. The Trial Bay kiosk cafe has magnificent panoramic view and the best coffee and homemade scones for morning tea. The boat shed at Matty's Flats boat ramp also has great culinary delights.

There is a great tackle shop, who can certify and weigh captured fish and who collect Mulloway frames for Fisheries research. The Co-op sells fresh local oysters, prawns and fish of course. There is a children's playground, toilet facilities, BBQ area and shop at the boat ramp. An ANSA member, Vic Grezl who lives in the Rocks, services boat motors, is full of local knowledge and always helps out whatever the problem is. There are medical centre, doctors, dentist, nursing home, police station and now ambulance depot. The town is constantly changing with pretty new cottages on new developments, but still retaining the peace and tranquillity of a small country town.

The nightly Happy Hours to tell of the day's captures, and the development of tomorrow's tactics with nibbles and drinks are refreshing.

To be there with your friends-what more could you want?

For more information, just ask Phil or Mary Worsley on 9661 5428 or any one of "the crowd" who regularly go there.

See you there 18 April to 9 May, 2015. *(or any part thereof—Ed)*

Waterbird Of The Month

Royal Spoonbill *Platalea regia*

Appearance. A large wading bird, 74-80 cm. The most conspicuous feature is the large black bill, flattened at the end. Non-breeding plumage usually pure white. In breeding season there is a faint buff wash on the breast, a small red skin patch below the forehead, a bright yellow patch above the eye and a distinctive nuchal (back of head and neck) crest. **Similar species** - Yellow-billed Spoonbill always has a light coloured bill and greyer legs,

Range & habitat. Most of Australia except the arid interior and south-west. Inhabits anywhere there is water of the correct depth, fresh, brackish or salt, including well-vegetated wetlands, tidal marshes, mangroves.

Feeding. Royal spoonbills feed on yabbies, shrimp, small fish and aquatic insects. The inside of the bill contains numerous sensory organs which allows them to detect prey as they sweep the bill from side to side.

Breeding. Nests in colonies, usually with other species such as Cormorants, Egrets and Ibis. A bowl-shaped nest of stick and twigs, lined with leaves and grass, is built in a tree, usually over water or reeds. A clutch of 2-4 eggs hatches in 20-25 days.

Voice. Usually silent, except when nesting when calls include soft honks, grunts and growls.



Roger Giller

